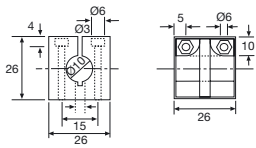
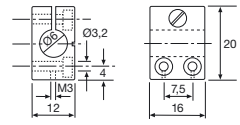


MOUNTING BRACKETS

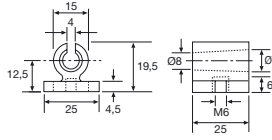
TR 10S
Screw clamp.
Size: Ø 10.
Material: Polycarbonate.



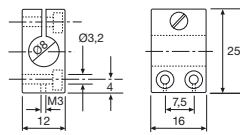
TR 6M
Screw clamp.
Size: Ø 6.
Material: Brass.



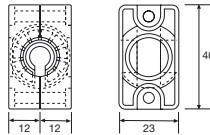
TR 10KB
Mounting clip.
Size: Ø 10.
Material: Polycarbonate.



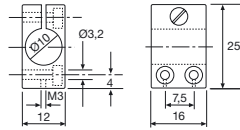
TR 8M
Screw clamp.
Size: Ø 8.
Material: Brass.



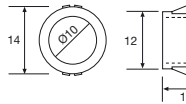
TR 10KG
Mounting Bracket
(40° swivel).
Size: Ø 10.
Material: Polycarbonate.



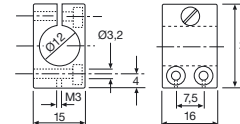
TR 10M
Screw clamp.
Size: Ø 10.
Material: Brass.



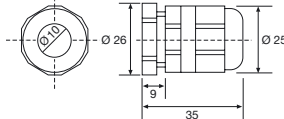
TR 10SB
Snap bushing.
Size: Ø 10.
Material: Polycarbonate.



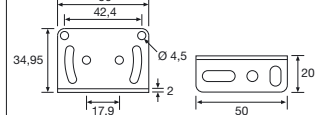
TR 12M
Screw clamp.
Size: Ø 12.
Material: Brass.



TR 10PG
Mounting nut.
Size: Ø 10.
Material: Polycarbonate.

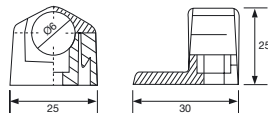


TR SP35-50 L
Mounting Bracket.
Size: 50 x 50.
Material: Stainless Steel.
2 x M4 hardware included.

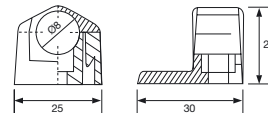


(Units in mm)

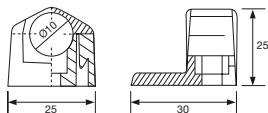
TRN 6
Mounting Bracket.
Size: Ø 6.
Material: Polycarbonate.



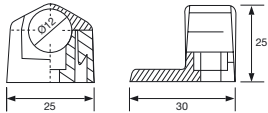
TRN 8
Mounting Bracket.
Size: Ø 8.
Material: Polycarbonate.



TRN 10
Mounting Bracket.
Size: Ø 10.
Material: Polycarbonate.



TRN 12
Mounting Bracket.
Size: Ø 12.
Material: Polycarbonate.



TRN 18
Mounting Bracket.
Size: Ø 18.
Material: Polycarbonate.

