

Laser Distance Measuring Device LMC-J-0200-x

The laser distance-meter LMC-J-0200 is robustly engineered especially for industrial applications. It works at distances up to 630 m. Up to 150m depending on type (-1: 35m; -2: 150m) and target reflectivity, no special reflector is needed. Measuring values are provided continuously via the integrated RS422/RS485. In this way the device is providing position information during the production process.

The LMC-J-0200-x can be used in distance measurement mode. All measuring parameters are adjustable.

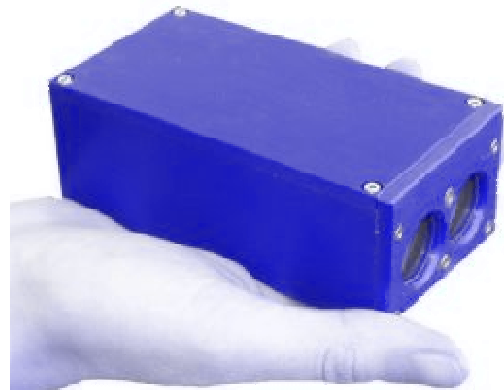
The high measuring speed allows the distance measurement of extremely fast moving objects.

The operation principle of the LMC-J-0200-x is time delay measurement, the measuring time is adjustable between 10 and 110 ms (a special version with 1ms is also available). Within a fraction of second one distance measurement is obtained by means of several hundreds or thousands of individual measures.

As option, for easy positioning up to approx. 20m to the target, the sensor can get a an integrated pilot laser. For larger distances an optional scope is available.



Version -p, with extra position laser



Technical Data

Wavelength	905 nm
Beam Divergence	2.5 x 0.2 mrd
Reflectorless Range	0.5 – 35 m (-1 type) 0.5 – 150 m (-2 type)
Max range (m)	630 m
Accuracy	50 mm
Resolution	10 mm
Rep rate	up to 100 Hz
Eye safety	Class 1
Data I/O	2m cable with 9-pin D-type
Power (VDC)	9 to 24
Interface	RS422/485
Environmental Operating Temperature	-10 to +60 °C
Dimensions	(103 x 54 x 38) mm
Weight	260g
Protection Class	IP67 Anodised Aluminium

